

Hutt International Boys' School Enrolment Scheme

The Hutt International Boys' School Board of Trustees is required to work within the maximum roll under the Integration Agreement. The Integration Agreement states that *"A preference of enrolment at the School...shall be given to those pupils with parents who have established a particular or general connection with the special character of the School..."*

SPECIAL CHARACTER is defined as:

Hutt International Boys School is a single sex school for pre- adolescent and adolescent boys from years 7 - 13.

Faith

HIBS is a Christian based school, has a code of conduct based on strong Christian principles instilled within the School, maintains an affiliation to the Anglican Church and within this environment, welcomes students from all cultures, religions and faiths.

Service

HIBS provides all students opportunities to demonstrate service and charity in a variety of contexts, including international communities within the Pacific Rim. HIBS provides all students opportunities to develop knowledge and understanding of differing cultures and languages, fostering an international perspective and a sound foundation in business studies and its' associated technologies.

Involvement

HIBS has a requirement that parents/caregivers actively participate with the school in enhancing the total education of their son/s and supporting all aspects of our Special Character.

These are detailed within the HIBS Integration Deed and seven Special Character key principles.

Each year, within 6 school weeks of the closing date for applications, the Board of Proprietors will, identify all 'preference applicants' whose parents/guardians have applied to enrol them in the College in the following year.

The Board of Proprietors will pass this list of preference applicants to the Board of Trustees. These applicants will be processed using the following order of priority.

First Priority: Priority to preference applicants for whom the school is 'reasonably convenient'.

The area of 'reasonably convenient' is outlined on the map provided with this Enrolment Scheme, and can be described as follows:

The area of reasonable convenience encompasses students who live within the city limits of the Wellington, Lower Hutt, Upper Hutt, and Porirua City Councils bounded by:

Upper Hutt north to the top of the Remutaka Hill

Porirua north to, and including, Pukerua Bay.

Should applications within this region exceed the number of places available, then the allocation of places will be made in the following order:

- a) Brothers of students who are currently attending the College.
- b) Brothers of former students who had a minimum of one Year in the senior school (Years 11-13.)
- c) Sons or grandsons of present staff who are employed by the Board of Trustees.
- d) Sons or grandsons of former students who had a minimum of one year in the senior school.
- e) Nephews of current or former students who had a minimum of one year in the senior school.
- f) Other preference students:

Second Priority: Preference students whose place of residence is outside the area of reasonable convenience. Allocation of places will be made in the same order as for *First Priority* applicants.

Third Priority: If all preferential applicants for places can be enrolled, the College is able to enrol a limited number of non-preference students (up to 10% of the maximum number of students in any one year). For non-preference students, allocation of places will be made in the same order as for *First Priority* students except the last step will change to become: Other non-preference students.

Note: For each step, within each priority group, if the number of applicants exceed the number of places available, a ballot will be used.

The selection process described for students in priority groups 1, 2, and 3 above will operate at each year level, depending on the number of places deemed by the Board of Trustees to be available at each year level.

Appendix A: Transitional Arrangement

For families of currently enrolled students whose addresses become out of zone as a result of the implementation of this Enrolment Scheme.

Section 75 of the Education and Training Act 2020 states that:

“the Secretary may authorise an enrolment scheme to permit a student to enrol at the school as if the student lived in the home zone of the school if...
(b) in the case of a new enrolment scheme, the student—
(i) lives outside of the home zone of the new enrolment scheme; and
(ii) has a sibling who is enrolled at the school at the time that the new enrolment scheme is implemented.”

This provision has been approved for inclusion in this Enrolment Scheme for a period of 6 years from the date of implementation.

If applying for enrolment under this part of the Enrolment Scheme, the siblings name, and evidence of a sibling relationship will be required by the school. Their enrolment will be treated as being first priority (in-zone).

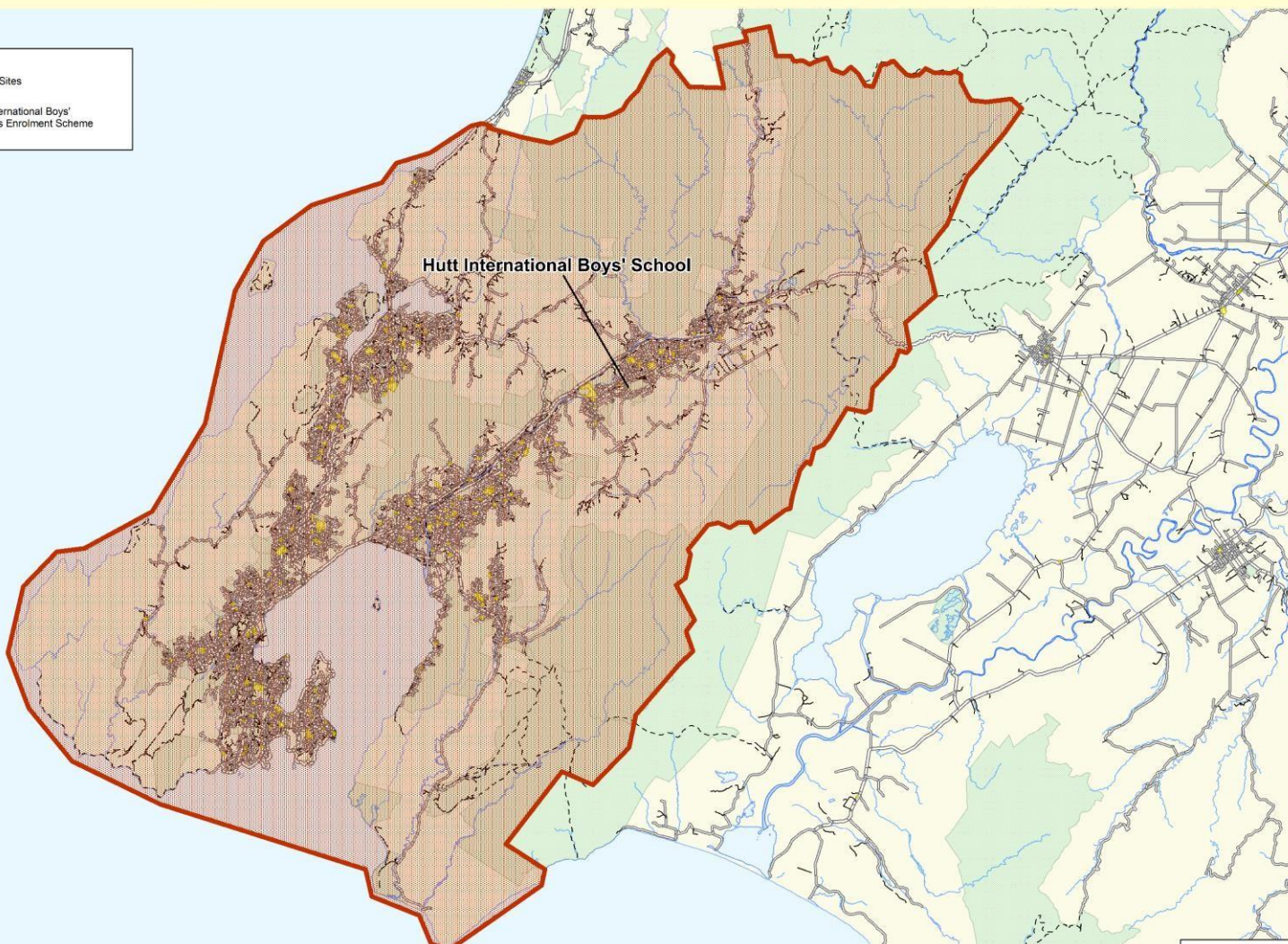
Section 75 of the Education and Training Act 2020 sets out the definition of a “sibling” for these purposes.

The school will maintain a list of students enrolled at the time of the implementation of the enrolment scheme to enable determination of eligibility to enrol under this provision.

Hutt International Boys' School's Enrolment Scheme

Legend

-  School Sites
-  Hutt International Boys' School's Enrolment Scheme



0 4
kilometers
Scale 1:212,800

Printed September 2022
Land information sourced from LINZ data.
Crown and Critchlow Copy Right Reserved.


TE TĀHURU O TE MĀTAURANGA
MINISTRY OF EDUCATION